

On every water scheme each water meter is like a cash register. Used properly it will generate income and minimise costs. To properly manage water costs and to efficiently and accurately assess water usage patterns, the scheme needs to tap into the information from the meters. How it does this can be of vital importance. Proper management needs up to date, timely and regular data.

Our system of Data collection provides THE most frequent, efficient, accurate and user friendly means of accessing this information.

Bulk Meters

Once your HomeRider is installed, all your meter information is sent to a personalised web site set up for your scheme. Using a secure username and password, you can see all your real time information 24/7.

Every 24 hours the data collected will be sent to the internet and this information will now be ready for viewing on your dedicated web site.

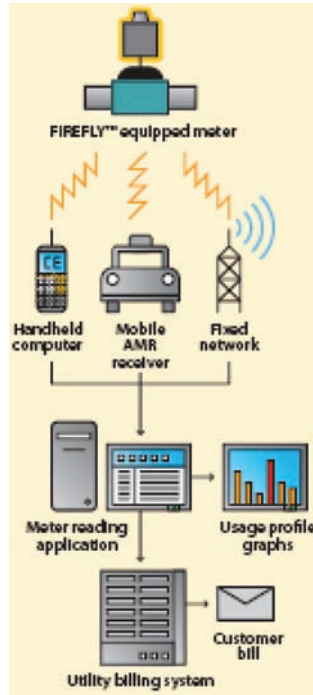
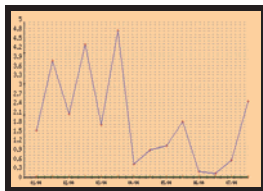
From your website you will be able to see ALL your consumption details. This can be used to identify any leakages, note any abnormal usage and plan your water savings or plan for future demand or maintenance schedules.

There are user defined options for viewing your water use - by hour, by date, by week, by month etc. This will help you pin point EXACTLY how your water is being used.

Alarm settings can be set to your specification - should this specification be exceeded an alarm will be triggered and the system will alert you by text or e mail, or both.

There is no software to install and access can be made from any internet connected pc.

- Monitors Bulk Meters
- Sends alarms via text or e mail
- Gives monitoring & information 24/7
- Your own personalised web site
- No software installation needed
- Secure and safe to use



House Connections

Before your system is installed, we would survey and assess the most appropriate option for your scheme. This could be either walk by, drive by, fixed network or a combination of these.

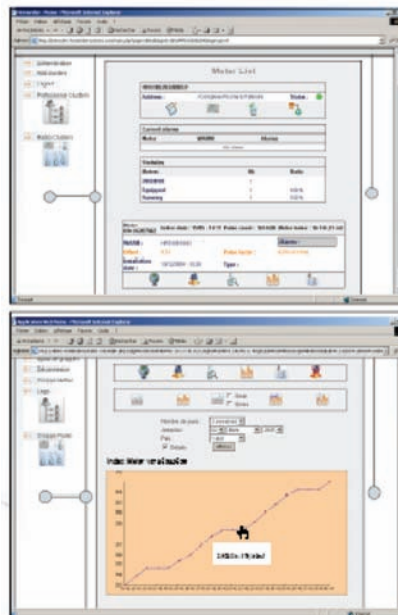
For drive by or walk by, readings are received via a RF signal to a handheld or mobile receiver.

Information from the handheld or mobile receiver can then be easily up loaded to your management package on your pc.

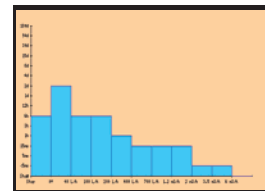
This data can be used for network management, reports and billing purposes.

This system comes with a multitude of options to suit the needs of your Group Water Scheme. Full training is provided and there is a service helpline.

The hand held unit (called a RoadRunner) is versatile, efficient and user friendly. The operator can program routes, make notes and set tasks. It uses windows based design for familiar functionality.



- Individual assessment of Scheme
- Walkby, driveby or fixed network options
- Fully adaptable to your scheme
- Full training and service helpline available
- Set your own routes
- Easily obtain regular readings
- Provide more timely billing



For more information visit our Website - www.expressvalveservices.com